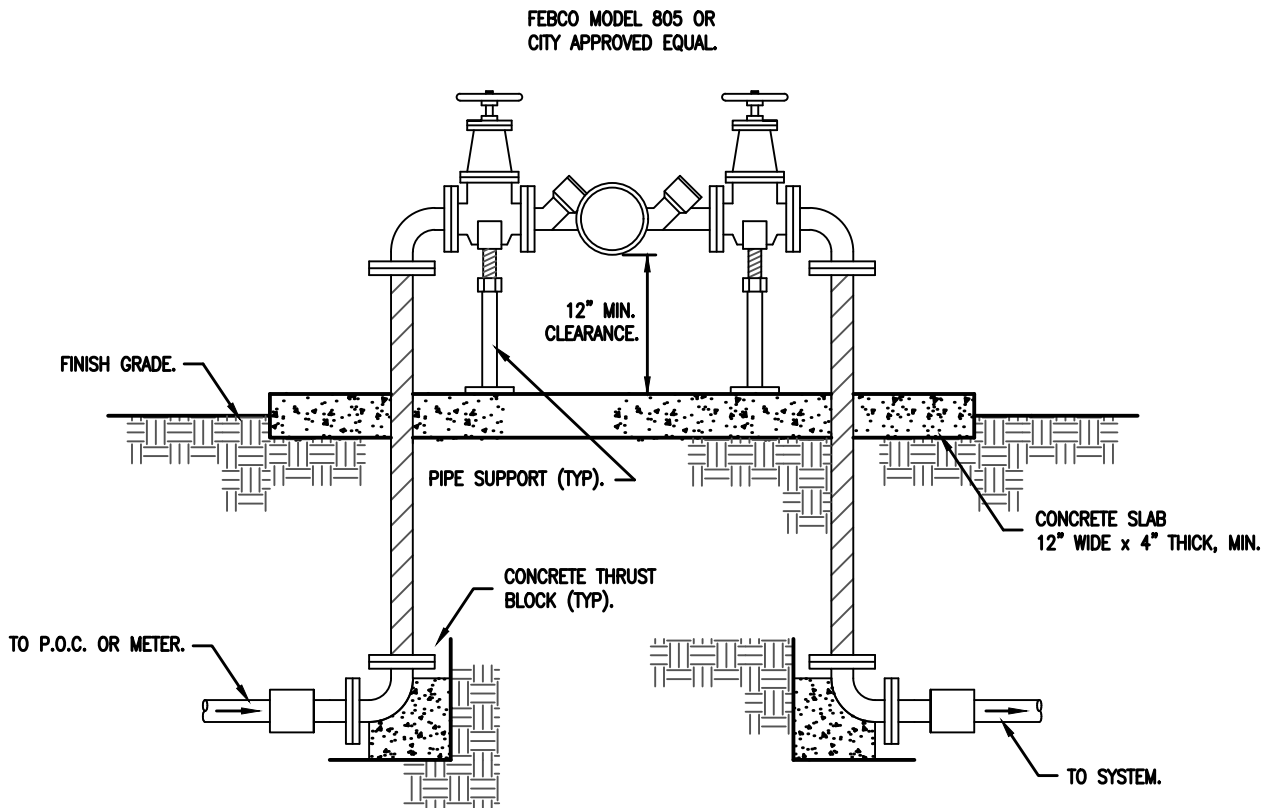


L:\PROJECTS\2019\190005\ACAD\DETAILS\W-W06.DWG 10/29/2019 11:10 AM



NOTES:

1. DOUBLE CHECK VALVE ASSEMBLIES IN SIZES 3/4" THRU 4" SHALL CONSIST OF TWO BRASS, INTERNALLY SPRING-LOADED CHECK VALVES, TWO GATE VALVES AND FOUR TEST COCKS.
2. DOUBLE CHECK VALVE ASSEMBLIES IN SIZES 6", 8" AND 10" SHALL CONSIST OF TWO INTERNALLY SPRING-LOADED CHECK VALVES WITH CAST IRON BODIES AND BRONZE INTERNAL PARTS, TWO GATE VALVES AND FOUR TEST COCKS.
3. INTERNAL PARTS OF ALL CHECK VALVES SHALL BE EASILY ACCESSIBLE FROM THE TOP OF THE DEVICE WITHOUT REMOVING THE CHECK VALVE BODY FROM THE LINE. THE ASSEMBLY SHALL BE RATED 150 PSI WORKING PRESSURE (300 PSI HYDROSTATIC TEST) AND SHALL WITHSTAND TEMPERATURES OF 32°F TO 140°F.
4. THE ASSEMBLY MUST MEET ALL OF THE REQUIREMENTS OF STATE AND LOCAL REGULATORY AGENCIES.
5. ASSEMBLY SHALL BE TESTED AND APPROVED BY CERTIFIED TECHNICIAN PRIOR TO REQUEST FOR FINAL INSPECTION.
6. ASSEMBLY SHALL BE INSTALLED WHERE IT WILL BE ACCESSIBLE FOR PERIODIC TESTING. (ANNUAL TESTS BY A STATE LICENSED TECHNICIAN ARE THE OWNER'S RESPONSIBILITY)
7. DOUBLE CHECK VALVE ASSEMBLIES ARE FOR DOMESTIC, NON-TOXIC APPLICATIONS ONLY. THE PRESENCE OF TOXIC MATERIALS NECESSITATES THE REQUIREMENT FOR A REDUCED PRESSURE (RP) DEVICE, APPROVED BY THE CITY.

City of Woodlake  
Improvement Standards

BACKFLOW PREVENTION ASSEMBLY

Revisions

Date: OCTOBER 29, 2019

  
City Engineer

Standard  
No.

W-6